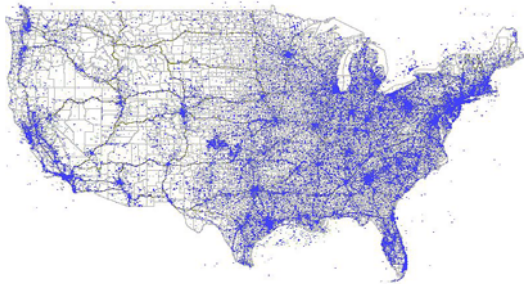




Over 220,000 sites compiled from over 450 facility owners and managers

Locate and map readily-leased wireless facilities (towers, rooftops, water tanks, raw land) to deploy, analyze PCS, cellular, paging, LMDS and other wireless coverage.

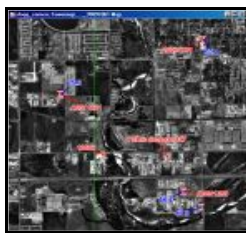


#### Designed For:

Wireless Carriers, Local Governments, Tower Owners/Managers, Site Acquisition Specialists, RF Engineers, Site Planners, and Wireless Market Analysts.



Overlay on USGS Quad



Aerial Photo Overlay

#### Database Contents:

Site Name, Latitude, Longitude (decimal degrees), AGL (Tower) Height, AMSL Height, Ground Elevation, Site ID, Owner/Manager Name, Leasing Agent Telephone, Type of Structure, Street Address.

#### Geographic Coverage:

Continental United States, Alaska, Hawaii and Canada.

#### Scale/Coordinates:

1:24,000 / Latitude & Longitude, NAD83.

#### Data Formats:

MapInfo (.mif and .mid), ArcView (Shape files), Maptitude (.cdf), MapPoint (.ptm) and PocketStreets GIS formats, and Excel (.xls) and Access databases (.mdb) formats.

#### Product Specifications:

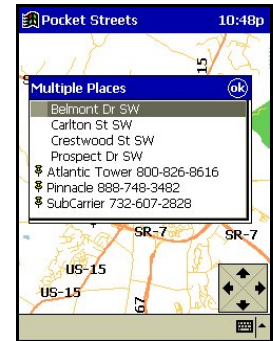
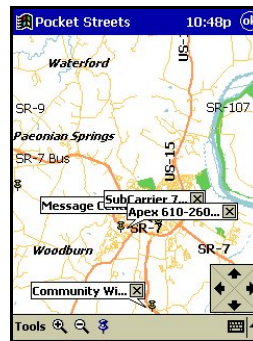
In order to geographically display Tower Maps, you must have a GIS or desktop mapping system to display points using latitude/longitude.

#### Data Use:

Licenses are for a single location and may be used to support multiple users within the same physical building (mailing/street address). *[Multiple office discounts are available.]*

#### Pocket Tower Maps

Take your maps with you. Complete county maps with streets, shopping centers, gas stations and other places of interest. Runs on Pocket Windows (Windows CE) PDA.



38659 Bolington Rd  
Lovettsville, VA 20180

Tel: 540-822-5092 Fax: 540-822-4469

Email: [sales@towermaps.com](mailto:sales@towermaps.com)

<http://www.towermaps.com>